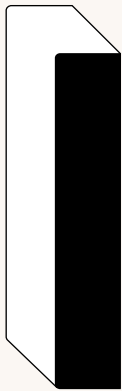
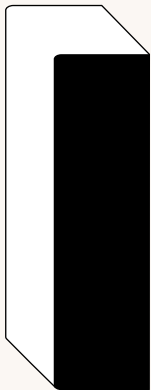


<b>E2E - 1/2 X 2</b> <hr/> 1/2" x 1-1/2"   (M)	<b>E2E - 1/2 X 4</b> <hr/> 1/2" x 3-1/2"   (M)	<b>E2E - 1/2 X 6</b> <hr/> 1/2" x 5-1/2"   (M)
<b>E2E - 1/2 X 3</b> <hr/> 1/2" x 2-1/2"   (M)	<b>E2E - 1/2 X 5</b> <hr/> 1/2" x 4-1/2"   (M)	<b>E2E - 1/2 X 8</b> <hr/> 1/2" x 7-1/4"   (M)



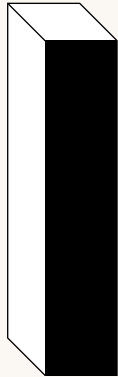
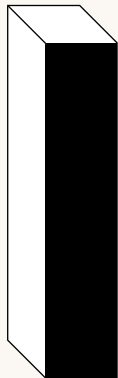
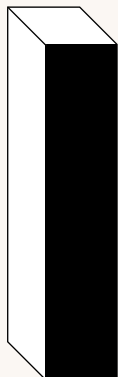
<b>E2E - 1 X 2</b> <hr/> 11/16" x 1-1/2"   (KA) (M)	<b>E2E - 1 X 5</b> <hr/> 11/16" x 4-9/16"   (KA) (M)	<b>E2E - 1 X 8</b> <hr/> 11/16" x 7-1/4"   (KA) (M)
<b>E2E - 1 X 3</b> <hr/> 11/16" x 2-1/2"   (KA) (M)	<b>E2E - 1 X 6</b> <hr/> 11/16" x 5-1/2"   (KA) (M)	<b>E2E - 1 X 10</b> <hr/> 11/16" x 9-1/4"   (KA) (M)
<b>E2E - 1 X 4</b> <hr/> 11/16" x 3-1/2"   (KA) (M)	<b>E2E - 1 X 7</b> <hr/> 11/16" x 6-9/16"   (KA) (M)	<b>E2E - 1 X 12</b> <hr/> 11/16" x 11-1/4"   (KA) (M)

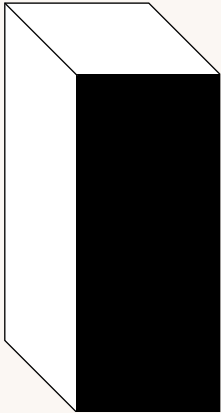


<b>E2E - 5/4 X 4</b> <hr/> 1" x 3-1/2"   (KA) (M)	<b>E2E - 5/4 X 6</b> <hr/> 1" x 5-1/2"   (KA) (M)	<b>E2E - 5/4 X 8</b> <hr/> 1" x 7-1/4"   (KA) (M)
--	--	--

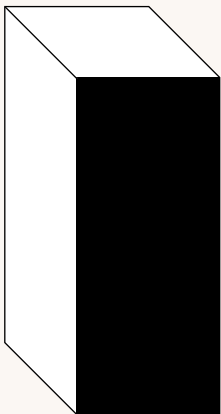
<b>KEY:</b>	Hemlock	Fingerjoint Primed Pine	Knotty Alder	Fir	MDF
-------------	---------	-------------------------	--------------	-----	-----

## S4S

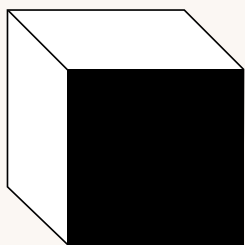
**S4S - 1 X 2 MG**3/4" x 1-1/2" | **H****S4S - 1 X 5 MG**3/4" x 4-1/2" | **H****S4S - 1 X 3 MG**3/4" x 2-1/2" | **H****S4S - 1 X 6 MG**3/4" x 5-1/2" | **H****S4S - 1 X 10 MG**3/4" x 9-1/4" | **H****S4S - 1 X 4 MG**3/4" x 3-1/2" | **H****S4S - 1 X 8 MG**3/4" x 7-1/4" | **H****S4S - 1 X 12 MG**3/4" x 11-1/4" | **H****S4S - 1 X 2 VG**3/4" x 1-1/2" | **H F****S4S - 1 X 5 VG**3/4" x 4-9/16" | **H F****S4S - 1 X 8 VG**3/4" x 7-1/4" | **H F****S4S - 1 X 3 VG**3/4" x 2-1/2" | **H F****S4S - 1 X 6 VG**3/4" x 5-1/2" | **H F****S4S - 1 X 10 VG**3/4" x 9-1/4" | **H F****S4S - 1 X 4 VG**3/4" x 3-1/2" | **H F****S4S - 1 X 7 VG**3/4" x 6-9/16" | **H****S4S - 1 X 12 VG**3/4" x 11-1/4" | **H F****S4S - 1 X 2 FJPR**3/4" x 1-1/2" | **FJP****S4S - 1 X 5 FJPR**3/4" x 4-1/2" | **FJP****S4S - 1 X 3 FJPR**3/4" x 2-1/2" | **FJP****S4S - 1 X 6 FJPR**3/4" x 5-1/2" | **FJP****S4S - 1 X 10 FJPR**3/4" x 9-1/4" | **FJP****S4S - 1 X 4 FJPR**3/4" x 3-1/2" | **FJP****S4S - 1 X 8 FJPR**3/4" x 7-1/4" | **FJP****S4S - 1 X 12 FJPR**3/4" x 11-1/4" | **FJP**



<b>S4S - 2 X 3 VG</b> 1-1/2" x 2-1/2"   <b>F</b>	<b>S4S - 2 X 6 VG</b> 1-1/2" x 5-1/2"   <b>F</b>	<b>S4S - 2 X 10 VG</b> 23/32" x 9-1/4"   <b>F</b>
<b>S4S - 2 X 4 VG</b> 1-1/2" x 3-1/2"   <b>F</b>	<b>S4S - 2 X 8 VG</b> 1-1/2" x 7-1/4"   <b>F</b>	<b>S4S - 2 X 12 VG</b> 1-1/2" x 11-1/4"   <b>F</b>



<b>S4S - 5/4 X 4</b> 1" x 3-1/2"   <b>H</b>	<b>S4S - 5/4 X 6</b> 1" x 5-1/2"   <b>H</b>	
<b>S4S - 5/4 X 4</b> 1-1/16" x 3-1/2"   <b>FJP</b>	<b>S4S - 5/4 X 6</b> 1-1/16" x 5-1/2"   <b>FJP</b>	<b>S4S - 5/4 X 8</b> 1-1/16" x 7-1/4"   <b>FJP</b>



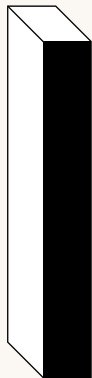
<b>S4S - 2 X 2 MG</b> 1-1/2" x 1-1/2"   <b>H</b> <b>F</b>	<b>S4S - 2 X 2</b> 1-1/2" x 1-1/2"   <b>O</b> <b>POP</b>
<b>S4S - 4 X 4 MG</b> 3-1/2" x 3-1/2"   <b>H</b> <b>F</b>	<b>S4S - 4 X 4</b> 3-1/2" x 3-1/2"   <b>O</b>

**KEY:** **H** Hemlock | **FJP** Fingerjoint Primed Pine | **O** Oak | **POP** Poplar | **F** Fir

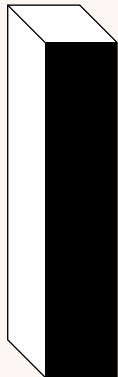
S4S



<b>S4S - 1/4 X 2</b> 1/4" x 1-1/2"   POP	<b>S4S - 1/4 X 4</b> 1/4" x 3-1/2"   POP	
<b>S4S - 1/4 X 3</b> 1/4" x 2-1/2"   POP	<b>S4S - 1/4 X 6</b> 1/4" x 5-1/2"   POP	<b>S4S - 1/4 X 8</b> 1/2" x 7-1/4"   POP



<b>S4S - 1/2 X 2</b> 1/2" x 1-1/2"   POP	<b>S4S - 1/2 X 4</b> 1/2" x 3-1/2"   H POP	
<b>S4S - 1/2 X 3</b> 1/2" x 2-1/2"   POP	<b>S4S - 1/2 X 6</b> 1/2" x 5-1/2"   H POP	<b>S4S - 1/2 X 8</b> 1/2" x 7-1/4"   POP



<b>S4S - 1 X 2</b> 3/4" x 1-1/2"   O POP B C W MG MPL		
<b>S4S - 1 X 3</b> 3/4" x 2-1/2"   O POP B C W MG	<b>S4S - 1 X 6</b> 3/4" x 5-1/2"   O POP B C W MG MPL	<b>S4S - 1 X 10</b> 3/4" x 9-1/4"   O
<b>S4S - 1 X 4</b> 3/4" x 3-1/2"   O POP B C W MG MPL	<b>S4S - 1 X 8</b> 3/4" x 7-1/4"   O POP C	<b>S4S - 1 X 12</b> 3/4" x 11-1/4"   O POP

KEY: H Hemlock SP Solid Pine FJP Fingerjoint Primed Pine O Oak KA Knotty Alder

## SPECIES TYPES

---



### HEMLOCK

Hemlock is light brown with red tinges. It features uneven, commonly twisted grain and has a medium-coarse texture. A good selection if you plan on staining your jamb and frame components.

H



### SOLID PINE

Clear Pine is a knot-free wood with a signature rustic look. It is very sturdy and durable.

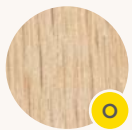
SP



### FINGERJOINT PRIMED PINE

Primed Fingerjoint Pine is great for those who plan on painting their millwork but still prefer to work with real wood as opposed to MDF.

FJP



### OAK

Oak is very hard, heavy and strong. Despite its density, it is very easy to work with.

O



### KNOTTY ALDER

As one would expect, this wood can have many large knots and splits. This is the perfect choice for rustic style projects.

KA



### POPLAR

This is the most cost-effective hardwood offered. The softest of the hardwoods, Poplar is excellent for paint grade but can still be stained.

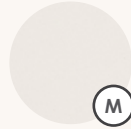
POP



### FIR

Douglas Fir is offered in vertical and mixed grain. Its pink color reddens over time.

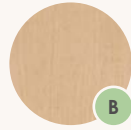
F



### MDF

Medium-Density Fiberboard (MDF) is a reconstituted wood panel product. It is dry-processed fiberboard manufactured from wood fibers. Known for its consistency, ease of handling and superior paint adhesion.

M



### BIRCH

The wood of Yellow Birch is heavy, strong, close-grained, even-textured and shows a wide color variation from reddish-brown to creamy white. It is used for furniture, cabinetry and interior finish.

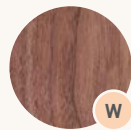
B



### CHERRY

Cherry is a very heavy and strong wood that machines and sands very smooth. From furniture to small accessories to built-ins, this is a top class wood.

C



### WALNUT

Quite durable and strong, its colors can be light to chocolate brown with large growth rings. The sapwood is often times white.

W



### MAHOGANY

One of the foremost cabinet woods in the world. Mahogany is straight grain to interlocked grain and has a medium-coarse texture. Varies slightly in color from light reddish-brown to medium red.

MG



### MAPLE

Maple is characterized as dense and light in color. It is a fine textured and close-grained wood that does not require filling.

MPL